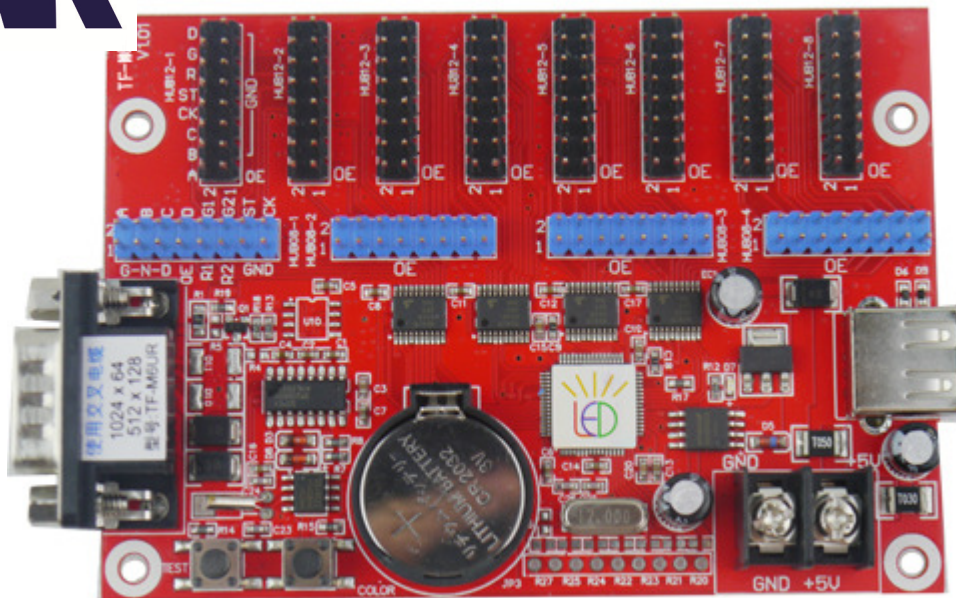




## MAAK LED CONTROL CARD TF-M3U



### Product Description

Model	<b>TF-M3U</b>
State	<b>Batch supply</b>
Function introduction	Multi-area displays, colorful borders, U disk program update, U disk panel set-up, LED display asynchronous control card.
Usage	indoor/outdoor
USB function:	USB program update, USB brightness adjustment, USB panel setup. Settings stored as a file format and do not affect the original document in USB. SD card/mini-SD card is Compatible when using USB.
Pixel	Single colour:1024x64, 512x128;Double colour:512x64, 256x128
Ports	four 08 port; eight 12 ports
Scanning mode	support 1/16, 1/8, 1/4, 1/2, Scan the monochrome, double color module.
Storage	2M
Program number	Storage for maximum program number:20. Supported windows, with no more than 10 items for each.

Display	rain, fountain, scroll and much more
Border	support many Color border, Picture border
Flash format	support GIF, SWF
Image format	Support BMP, JPG, GIF, WMF, ICO
Brightness	Level 16 highlighted, support manual
screen switch	manual
Test button	On-board test button, Can switch over the
Extension function:	Temperature sensor/Temperature&humidity sensor(Diagram for connection), RF, RS485 networking, Monochrome expand height, Through to 75 full-color interface.
Electrical parameters	+5V DC(4.5V~6V), Power consumption<0.5W
Working temperature	-30°C~70°C
Size	73mm*103mm, Hole spacing:55mm*95mm